

Alto

NEKMEA All-District/All-State Sight-Singing Practice

The image displays eight staves of musical notation for an Alto voice part. The music is written in G major (one sharp) and 4/4 time. Each staff begins with a treble clef, a key signature of one sharp (F#), and a 4/4 time signature. The notation consists of a sequence of notes and rests across eight staves, ending with a double bar line. The melody is a single-line composition with various rhythmic values including quarter, eighth, and sixteenth notes, as well as rests.

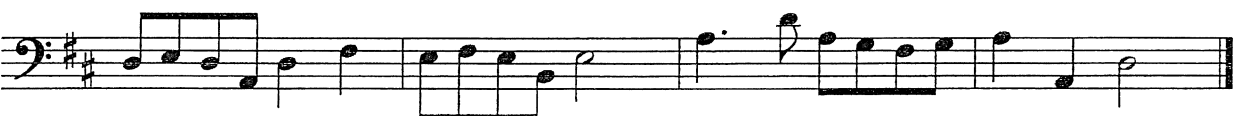
Tenor

NEKMEA All-District/All-State Sight-Singing Practice



Bass

NEKMEA All-District/All-State Sight-Singing Practice



2013 Sight-Singing Exercises

Soprano



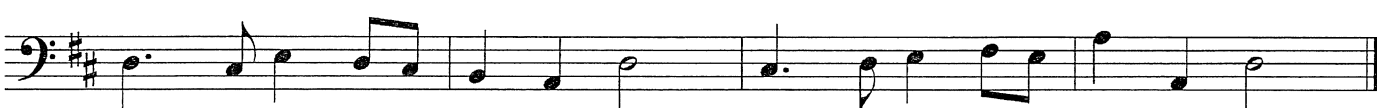
Alto



Tenor





Bass




NEKMEA 2014 Sight-Singing Exercises

Soprano  Musical notation for Soprano part, 4/4 time, key of D major. The melody consists of quarter notes: D4, E4, F#4, G4, A4, B4, C5, B4, A4, G4, F#4, E4, D4.

Alto  Musical notation for Alto part, 4/4 time, key of D major. The melody consists of quarter notes: D4, E4, F#4, G4, A4, B4, C5, B4, A4, G4, F#4, E4, D4.

Tenor  Musical notation for Tenor part, 4/4 time, key of D major. The melody consists of quarter notes: D4, E4, F#4, G4, A4, B4, C5, B4, A4, G4, F#4, E4, D4.

Bass  Musical notation for Bass part, 4/4 time, key of D major. The melody consists of quarter notes: D3, E3, F#3, G3, A3, B3, C4, B3, A3, G3, F#3, E3, D3.